



TECHNICAL REFERENCE

Welcome to the Easy MTD VAT Technical Reference document.

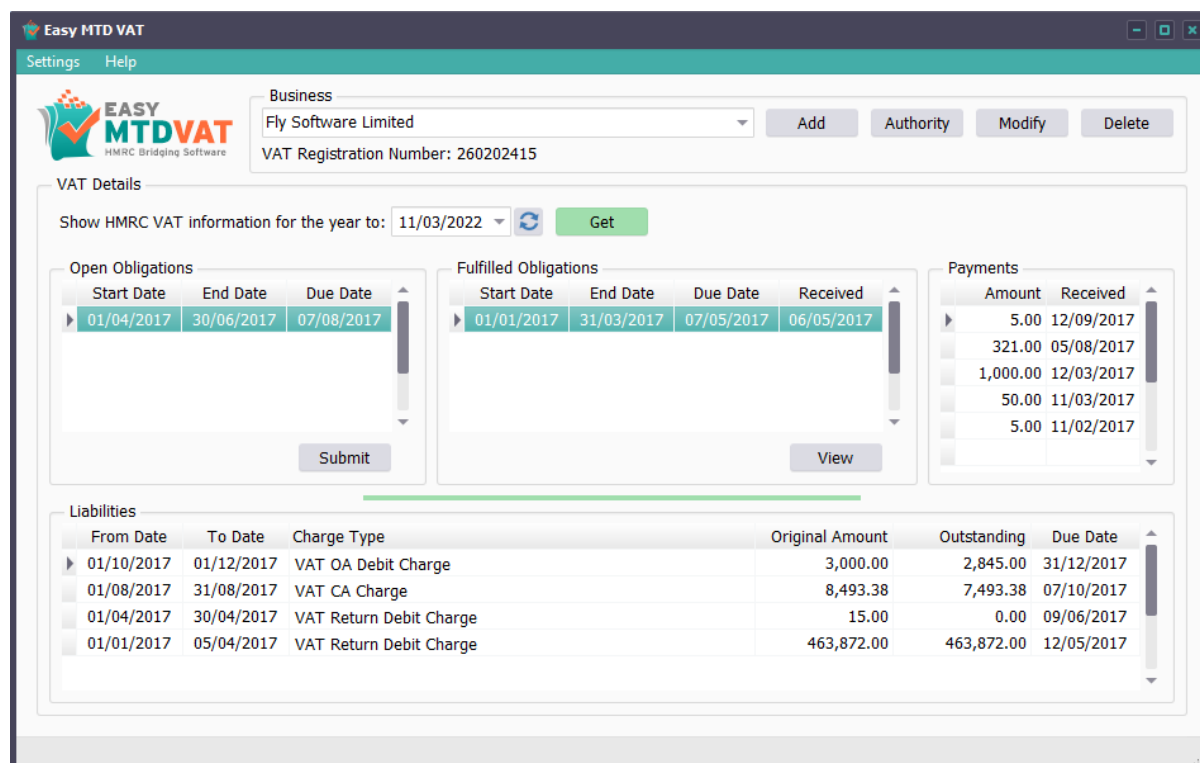
The following information is provided:

- [Introduction](#)
- [Download](#)
- [Release Notes](#)
- [Authenticity and Safety](#)
- [System Requirements](#)
- [Installation Files and Folders](#)
- [Proxy Settings](#)
- [Data Use](#)
- [Data Transmission](#)
- [Further Reading](#)
- [Contact Fly Software](#)

INTRODUCTION

Easy MTD VAT is bridging software for HMRC’s Making Tax Digital for VAT system. It enables users to view VAT obligations, liabilities and payments held by HMRC, and submit VAT returns from figures stored in an Excel spreadsheet or CSV file. It has been endorsed by HMRC, is fully compliant with Making Tax Digital for VAT and it appears on the HMRC “Find Software” web page:

<https://www.tax.service.gov.uk/making-tax-digital-software>



DOWNLOAD

The Easy MTD VAT setup file can be downloaded from the following location:

<https://easymtdvat.com/download>

The setup file does not exceed 5MB in size.

RELEASE NOTES

Easy MTD VAT is sometimes updated. Release notes can be found here:

<https://easymtdvat.com/support/release-notes?id=8>

AUTHENTICITY AND SAFETY

Code signing and virus and malware scanning is performed on the Easy MTD VAT software prior to release.

CODE SIGNING

The Easy MTD VAT setup file and run-time exe are both code-signed for Fly Software Ltd. The code signing certificate was issued by Sertico (formerly Comodo):

<https://sectigo.com/>

VIRUS AND MALWARE SCANNING

Easy MTD VAT has been scanned using the VirusTotal platform and is deemed free of viruses and malware:

<https://www.virustotal.com/gui/file/af7c6fbdba555195e334e2d265f06fec416e67b3aa0816964a171e26b7d2e7e5?nocache=1>

SYSTEM REQUIREMENTS

Easy MTD VAT is developed for the Microsoft Windows environment. It operates under both 32bit and 64bit platforms for the following versions of Windows and each of their variants:

- Windows 7*
- Windows 8
- Windows 10
- Windows 11

No particular PC/laptop specification is required for Easy MTD VAT to run efficiently but an Internet connection is necessary so communication with the HMRC MTD for VAT API server and the Fly Software server can be performed. A suitable screen resolution and scaling may also be required to show certain windows in their entirety.

*NOTE: Windows 7 is unsupported by Fly Software but Easy MTD VAT is known to operate with it at the point when this document was published.

INSTALLATION FILES AND FOLDERS

Easy MTD VAT installs files in the following default locations:

LOCATION	FUNCTION
C:\Program Files (x86)\Easy MTD VAT	Required for Easy MTD VAT to operate under Windows.
C:\ProgramData\Easy MTD VAT	Storage of user and business related data and for the personalisation of the Easy MTD VAT interface. If necessary, the location of this folder can be changed.

For further details about the data held and used by Easy MTD VAT, Fly Software and HMRC, refer to the [Data Use section](#), below.

PROXY SETTINGS

Proxy settings can be specified in the Proxy window which is accessed by clicking the Proxy option on the Settings menu.

DATA USE

Data specified by the user and obtained from the installation PC/laptop is used by Easy MTD VAT, Fly Software and HMRC.

EASY MTD VAT AND FLY SOFTWARE

During the operation of Easy MTD VAT, the following data is stored locally on the installation PC/laptop and remotely in the Fly Software database:

LOCALLY IN FILES

Stored by default in C:\ProgramData\Easy MTD VAT\Clients.dat and C:\ProgramData\Easy MTD VAT\Agents.dat:

- Reference of each business (searchref) (e.g. name of the business that submitted a VAT return)
- VAT registration number of each business (vrn)
- Additional information about each business (additionalinfo)
- Agent reference of each business (agentRef)
- Consultation number (if generated) for each business (consultationNumber)
- Access token (accessToken)
- Refresh token (refreshToken)
- Submission receipt data (see below)
- Spreadsheet settings

Stored by default in C:\ProgramData\Easy MTD VAT\App.ini:

- Email
- Password (encrypted)
- Interface settings such as width and height

REMOTELY IN THE FLY SOFTWARE DATABASE

- Email
- Password (encrypted)
- Name of each business
- VAT registration number of each business
- Period from date for each submission
- Period to date for each submission
- Submission receipt data:
 - Receipt ID
 - Receipt timestamp
 - Processing date
 - Payment indicator
 - Form bundle number
 - Charge reference number
- Other optional data within the Fly Software account such as name and contact details

The Fly Software database is in the MySQL format and is held on a UK-based server supplied by IONAS Cloud Ltd (formerly 1&1) (<https://www.ionos.co.uk>).

HMRC

HMRC require the following data obtained during the following processes:

PROCESS	DATA
Authorising Easy MTD VAT	VAT registration number, fraud headers
Retrieving VAT obligations, liabilities and payments	VAT registration number, fraud headers
Submitting a VAT return	9 VAT figures, VAT registration number, fraud headers

FRAUD HEADERS

To help prevent fraud, HMRC require information about the PC/laptop and operating system where Easy MTD VAT is installed. Referred to as fraud headers, this information is transmitted to HMRC when a VAT return is submitted and when VAT obligations, liabilities and payments are retrieved by Easy MTD VAT.

Below is a list of the information contained in the fraud headers:

- GUID generated during the installation of Easy MTD VAT
- Logged on user name and Fly Software account email
- Local UTC time zone
- A list of all local IP addresses
- Width, height, scaling factor and colour depth for all monitors
- Width and height of Easy MTD VAT's main window
- OS family/OS version and device manufacturer/device model
- "Easy MTD VAT" and its version
- A list of available MAC addresses

Further information about fraud headers can be found on the HMRC Developer Hub:

<https://developer.service.hmrc.gov.uk/api-documentation/docs/fraud-prevention>

DATA TRANSMISSION

Data is transmitted between Easy MTD VAT and the Fly Software server and the HMRC MTD for VAT API server.

FLY SOFTWARE SERVER

Data is transmitted between Easy MTD VAT and the Fly Software server using the https and the TLS v1.2 protocol.

The following URLs and request methods are used:

URL	FUNCTION	REQUEST METHOD
https://easymtdvat.com/app/qs4.php	Obtain submission receipt data held in the Fly Software database	POST
https://easymtdvat.com/app/qt4.php	Obtain the user's submission token quantity held in the Fly Software database	POST
https://easymtdvat.com/app/qv4.php	Obtain the Easy MTD VAT version number and HMRC sign up URL held in the Fly Software database	POST
https://easymtdvat.com/app/ut4.php	Insert the client reference, VAT registration number, period from date, period to date and submission receipt data into the Fly Software database for each VAT return submitted	POST

HMRC SERVER

Data is transmitted between Easy MTD VAT and the HMRC MTD for VAT API server using the https and the TLS v1.2 protocol.

The following URLs and request methods are used:

URL	FUNCTION	REQUEST METHOD
https://api.service.hmrc.gov.uk/organisations/vat/{vrn}/obligations	Retrieve VAT obligations	GET
https://api.service.hmrc.gov.uk/organisations/vat/{vrn}/returns	Submit VAT return for period	POST
https://api.service.hmrc.gov.uk/organisations/vat/{vrn}/returns/{periodKey}	View VAT return.	GET
https://api.service.hmrc.gov.uk/organisations/vat/{vrn}/liabilities	Retrieve VAT liabilities	GET
https://api.service.hmrc.gov.uk/organisations/vat/{vrn}/payments	Retrieve VAT payments	GET
https://api.service.hmrc.gov.uk/oauth/authorize https://api.service.hmrc.gov.uk/oauth/token	Obtain and grant authority to Easy MTD VAT	POST

FURTHER READING

The following documents and resources may also be of use when operating and evaluating Easy MTD VAT:

HELP

<https://easymtdvat.com/help/index>

KNOWLEDGEBASE

<https://easymtdvat.com/support/knowledgebase>

EULA

<https://easymtdvat.com/company/easy-mtd-vat-eula>

TERMS & CONDITIONS

<https://easymtdvat.com/company/terms-conditions>

PRIVACY POLICY

<https://easymtdvat.com/company/privacy-policy>

CONTACT FLY SOFTWARE

Website: <https://flysoftware.com>

Email: info@flysoftware.com